

ALLOWABLE Extrusion SPANS in SCREEN WALLS Not Supporting Roofs or Guardrails (Maximum Girt Spacing = 7 ft o.c.) FOR 100 & 110 Wind Zones Unit Load/Design Pressure = 13 psf Exposure B										
Extrusion	Post Spacing / Load Width									
	4'-0"	4'-6"	5'-0"	5'-6"	6'-0"	6'-6"	7'-0"	7'-6"	8'-0"	
2X2X.046" Hollow	6'-6" (1)	6'-2" (1)	5'-10" (1)	5'-7" (1)	5'-4" (1)	5'-1" (1)	4'-11" (1)	4'-9" (1)	4'-7" (1)	
2X2X.046" Self-Mating Snap	7'-5" (1)	6'-11" (1)	6'-7" (1)	6'-4" (1)	6'-0" (1)	5'-10" (1)	5'-7" (1)	5'-5" (1)	5'-3" (1)	
3X2X.050 Hollow *	7'-4" (1)	6'-11" (1)	6'-6" (1)	6'-3" (1)	5'-11" (1)	5'-9" (1)	5'-6" (1)	5'-4" (1)	5'-2" (1)	
2X3X.050" Hollow	8'-2" (1)	7'-9" (1)	7'-4" (1)	6'-11" (1)	6'-8" (1)	6'-5" (1)	6'-2" (1)	5'-11" (1)	5'-9" (1)	
2X3X.046" Self-Mating Snap	9'-7" (1)	9'-1" (1)	8'-7" (1)	8'-2" (1)	7'-10" (1)	7'-7" (1)	7'-3" (1)	7'-0" (1)	6'-10" (1)	
2X4X.050" Hollow	10'-3" (1)	9'-8" (1)	9'-2" (1)	8'-9" (1)	8'-4" (1)	8'-0" (1)	7'-9" (1)	7'-6" (1)	7'-3" (1)	
2X4X.046" Self-Mating Snap	11'-5" (1)	10'-9" (1)	10'-3" (1)	9'-9" (1)	9'-4" (1)	8'-11" (1)	8'-8" (1)	8'-4" (1)	8'-1" (1)	
2X4 Self-Mating Beam	9'-8" (1)	9'-1" (1)	8'-8" (1)	8'-3" (1)	7'-11" (1)	7'-7" (1)	7'-4" (1)	7'-1" (1)	6'-10" (1)	
2X5 Self-Mating Beam	12'-2" (1)	11'-6" (1)	10'-11" (1)	10'-5" (1)	9'-11" (1)	9'-7" (1)	9'-3" (1)	8'-11" (1)	8'-8" (1)	
2X6 Self-Mating Beam	13'-8" (1)	12'-11" (1)	12'-3" (1)	11'-8" (1)	11'-2" (1)	10'-9" (1)	10'-4" (1)	9'-11" (1)	9'-8" (2)	
2X7 Self-Mating Beam	17'-8" (1)	16'-8" (1)	15'-10" (2)	15'-1" (2)	14'-5" (2)	13'-11" (2)	13'-5" (2)	12'-11" (2)	12'-6" (2)	
2X8 Self-Mating Beam	26'-10" (2)	25'-4" (2)	24'-0" (2)	22'-11" (2)	21'-11" (2)	21'-1" (2)	20'-4" (2)	19'-7" (2)	18'-11" (2)	

* 3" Side parallel to screen surface [Tabular Value in paranthesis indicates Load Condition for Post End Fastening Detail]

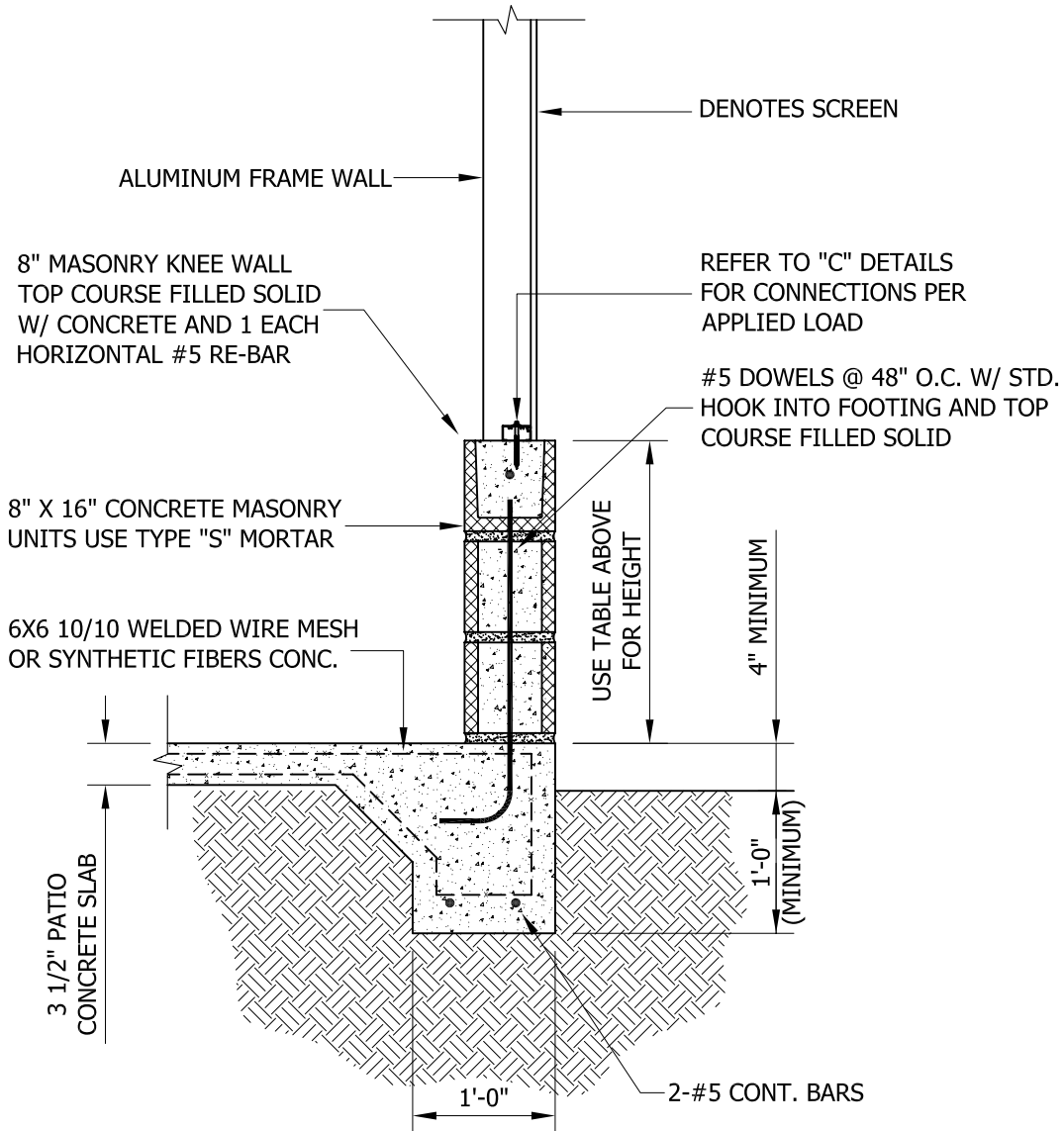
Chapter 1 - Screen Enclosures

Allowable Wall Heights (feet)
8" CMU Knee-Walls in Screen Enclosures
by Exposure B Wind Zone

Wall Heights:	100/110	120	130	140
8" CMU:	6	6	5	4
Aluminum:	10	8	9	9
Height Overall:	16	14	14	13

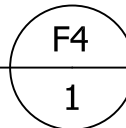
Allowable Wall Heights (feet)
8" CMU Knee-Walls in Screen Enclosures
by Exposure C Wind Zone

Wall Heights:	100/110	120	130	140
8" CMU:	5	5	4	4
Aluminum:	9	7	8	7
Height Overall:	14	12	12	11



WALL BEARING ON BLOCK KNEE WALL

(BLOCK KNEE WALL ALSO KNOWN AS
8" CMU WALL OR APRON WALL)



Chapter 6 - Carports & Patio Covers / Open

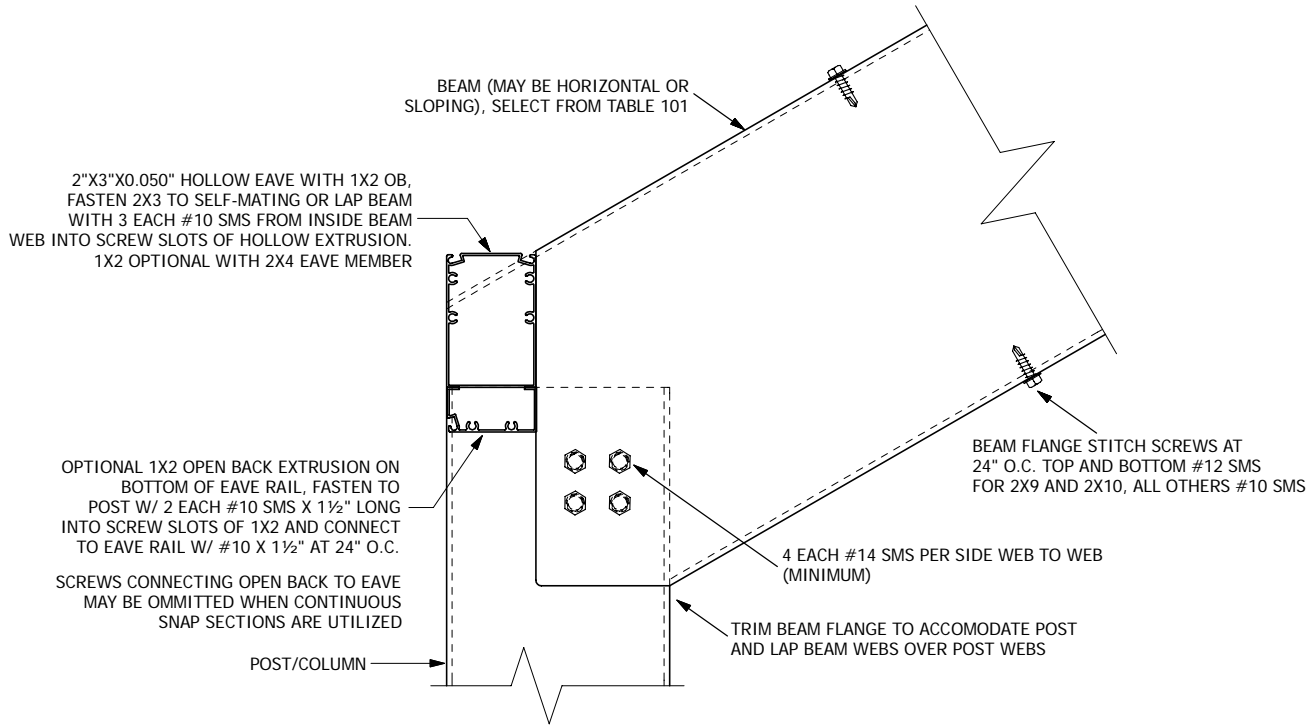
Allowable Column (Post) Spans for Open Covers		Table 608 a & b			
up to 110 mph Exposure B	Allowable Column Spans (Heights) by Module Size				
Column Specified:	12 X 12	12 X 22	22 X 12	22X22	
3 X 3 X 0.090 X 0.090 Hollow	5'-0"	4'-3"	4'-2"	4'-2"	
4 X 4 X 0.125 X 0.125 Hollow	8'-5"	7'-5"	6'-6"	5'-7"	
4 X 4 X 0.25 X 0.25 Hollow	11'-1"	9'-10"	8'-8"	7'-7"	
3 X 3 X 3/16" A36 Square Steel	12'-0"	10'-7"	9'-4"	7'-6"	
3½ X 3½ X 3/16" A36 Square Steel	12'-2"	10'-9"	9'-6"	8'-0"	
4 X 4 X 3/16" A36 Square Steel	12'-7"	11'-2"	9'-11"	8'-8"	
5 X 5 X 3/16" A36 Square Steel	20'-6"	18'-9"	17'-0"	15'-1"	

Allowable Column (Post) Spans for Open Covers		Table 608 c			
120 mph Exposure B	Allowable Column Spans (Heights) by Module Size				
Column Specified:	12 X 12	12 X 22	22 X 12	22X22	
4 X 4 X 0.125 X 0.125 Hollow	8'-3"	7'-4"	6'-6"	5'-7"	
4 X 4 X 0.25 X 0.25 Hollow	10'-10"	9'-8"	8'-7"	7'-6"	
3 X 3 X 3/16" A36 Square Steel	11'-9"	10'-5"	9'-3"	7'-6"	
3½ X 3½ X 3/16" A36 Square Steel	11'-11"	10'-7"	9'-5"	7'-11"	
4 X 4 X 3/16" A36 Square Steel	12'-4"	11'-0"	9'-10"	8'-7"	
5 X 5 X 3/16" A36 Square Steel	19'-11"	18'-3"	16'-8"	14'-11"	

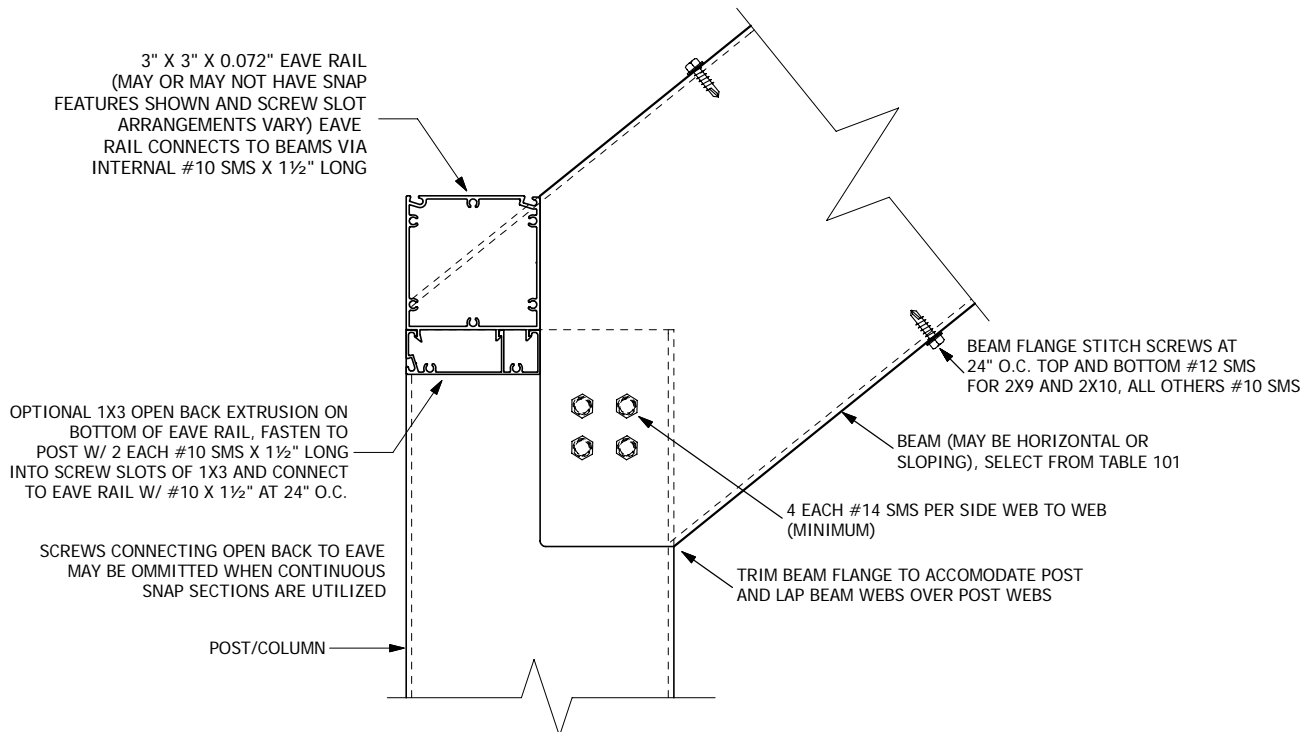
Allowable Column (Post) Spans for Open Covers		Table 608 d			
130 mph Exposure B	Allowable Column Spans (Heights) by Module Size				
Column Specified:	12 X 12	12 X 22	22 X 12	22X22	
3 X 3 X 0.090 X 0.090 Hollow	4'-11"	4'-2"	4'-2"	4'-2"	
4 X 4 X 0.125 X 0.125 Hollow	8'-2"	7'-3"	6'-5"	5'-6"	
4 X 4 X 0.25 X 0.25 Hollow	10'-8"	9'-7"	8'-6"	7'-6"	
3 X 3 X 3/16" A36 Square Steel	11'-7"	10'-4"	9'-2"	7'-5"	
3½ X 3½ X 3/16" A36 Square Steel	11'-9"	10'-6"	9'-4"	7'-10"	
4 X 4 X 3/16" A36 Square Steel	12'-1"	10'-10"	9'-9"	8'-7"	
5 X 5 X 3/16" A36 Square Steel	19'-4"	17'-10"	16'-5"	14'-8"	

Allowable Column (Post) Spans for Open Covers		Table 608 e			
140 mph Exposure B	Allowable Column Spans (Heights) by Module Size				
Column Specified:	12 X 12	12 X 22	22 X 12	22X22	
3 X 3 X 0.090 X 0.090 Hollow	4'-10"	4'-2"	4'-2"	4'-2"	
4 X 4 X 0.125 X 0.125 Hollow	8'-0"	7'-2"	6'-5"	5'-5"	
4 X 4 X 0.25 X 0.25 Hollow	10'-6"	9'-5"	8'-5"	7'-5"	
3 X 3 X 3/16" A36 Square Steel	11'-5"	10'-2"	9'-1"	7'-4"	
3½ X 3½ X 3/16" A36 Square Steel	11'-6"	10'-4"	9'-3"	7'-9"	
4 X 4 X 3/16" A36 Square Steel	11'-10"	10'-9"	9'-8"	8'-6"	
5 X 5 X 3/16" A36 Square Steel	18'-10"	17'-6"	16'-1"	14'-6"	

Chapter 1 - Screen Enclosures



SECTION (1) AT SCREEN EAVE ON LONGITUDINAL WALLS
(FOR WIND ZONES LESS THAN 120 MPH)



SECTION (2) AT SCREEN EAVE ON LONGITUDINAL WALLS
(FOR WIND ZONE 120 MPH AND GREATER)

Table 503 - Post to Beam Fastening

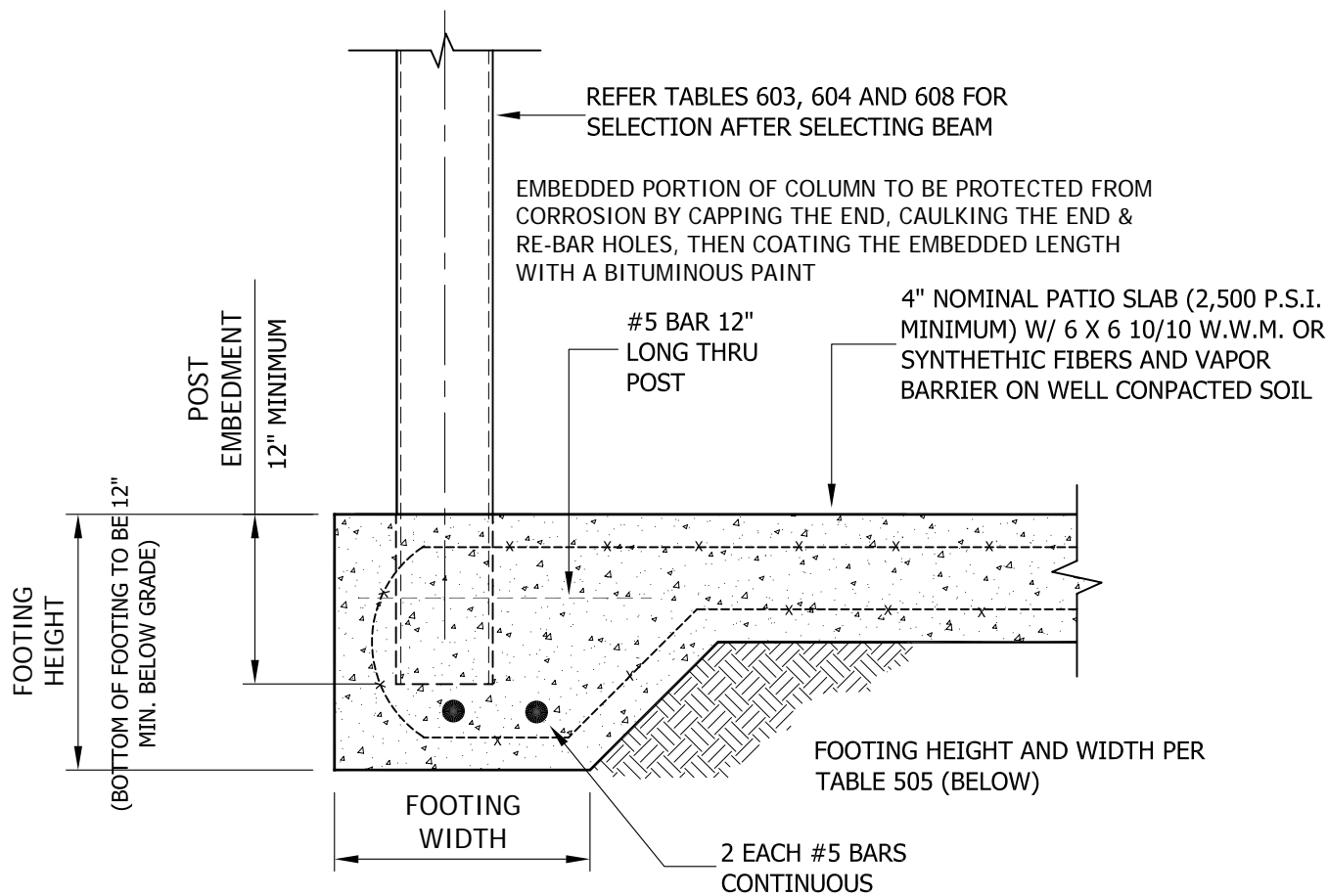
Beam / Section	(Abbr)	Minimum Post Size	Bolts Required	
			# of Bolts	Diameter
2" X 3 or 4 Hollow or Snap	Varies	3"X3"X.060	2	3/8"
2"X4" Self-Mating Beam	2X4 SMB	3"X3"X.060	3	3/8"
2"X5" Self-Mating Beam	2X5 SMB	3"X3"X.060	3	1/2"
2"X6" Self-Mating Beam	2X6 SMB	3"X3"X.060	3	5/8"
2"X7" Self-Mating Beam	2X7 SMB	3"X3"X.060	4	5/8"
2"X8" Self-Mating Beam	2X8 SMB	3"X3"X.093	3	5/8"
2"X9" Self-Mating Beam	2X9L SMB	3"X3"X.093	3	5/8"
2"X9" Self-Mating Beam	2X9H SMB	3"X3"X.093	4	1/2"
2"X10" Self-Mating Beam	2X10 SMB	3"X3"X.093	4	5/8"
Double 2"X9"(H) SMB	2-2X9	4"X4"X.125	2	3/4"
Double 2"X10" SMB	2-2X10	4"X4"X.125	3	5/8"

Table 504

POST FASTENINGS TO CONCRETE AND ISOLATED FOOTING SIZES

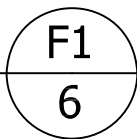
LOAD INDEX #	Isolated Footing Size	Minimum Post	Size of Double 6063-T6 Angles Required (Note #1)	Size of Double 6061-T6 Angles Required (Note #1)	Angle to Column Bolts	Concrete Anchors
A	2' - 0" X 2' - 0" X 2' - 0"	3X3X.06 Fluted	2" X 3" X 5/16"	2" X 3" X 1/4"	2 Each 3/8" Dia	2 Each 5/16" Dia X 2" Embedment
B	2' - 4" X 2' - 4" X 2' - 0"	3X3X.06 Fluted	2-1/2" X 2-1/2" X 3/8"	2" X 3" X 1/4"	2 Each 1/2" Dia	2 Each 3/8" Dia X 2" Embedment
C	2' - 8" X 2' - 8" X 2' - 8"	3"X3"X.093"	2-1/2" X 2-1/2" X 1/2"	2-1/2" X 2-1/2" X 3/8"	2 Each 1/2" Dia	2 Each 1/2" Dia X 3" Embedment
D	3' - 0" X 3' - 0" X 3' - 0"	3"X3"X.125"	2-1/2" X 2-1/2" X 1/2"	2-1/2" X 2-1/2" X 3/8"	2 Each 5/8" Dia	2 Each 5/8" Dia X 6" Embedment
E	3' - 4" X 3' - 4" X 3' - 2"	4"X4"X.125"	2-1/2" X 2-1/2" X 5/8"	2-1/2" X 2-1/2" X 1/2"	3 Each 1/2" Dia	2 Each 3/4" Dia X 7" Embedment
F	3' - 8" X 3' - 8" X 3' - 8"	4"X4"X.125"	Bury Column into Concrete per detail or Site Specific Engineering			
G	4' - 0" X 4' - 0" X 4' - 0"	4"X4"X.125"	Bury Column into Concrete per detail or Site Specific Engineering			

Note #1: Size of angle legs may vary, so long as, concrete anchors are within 1" of outside face of vertical angle leg and vertical leg can accommodate bolts specified. Length of angle is considered to be equal to the size of the column specified.
 Isolated Concrete Footing Note: Footings of 3' - 0" and above require reinforcement in top (and bottom).



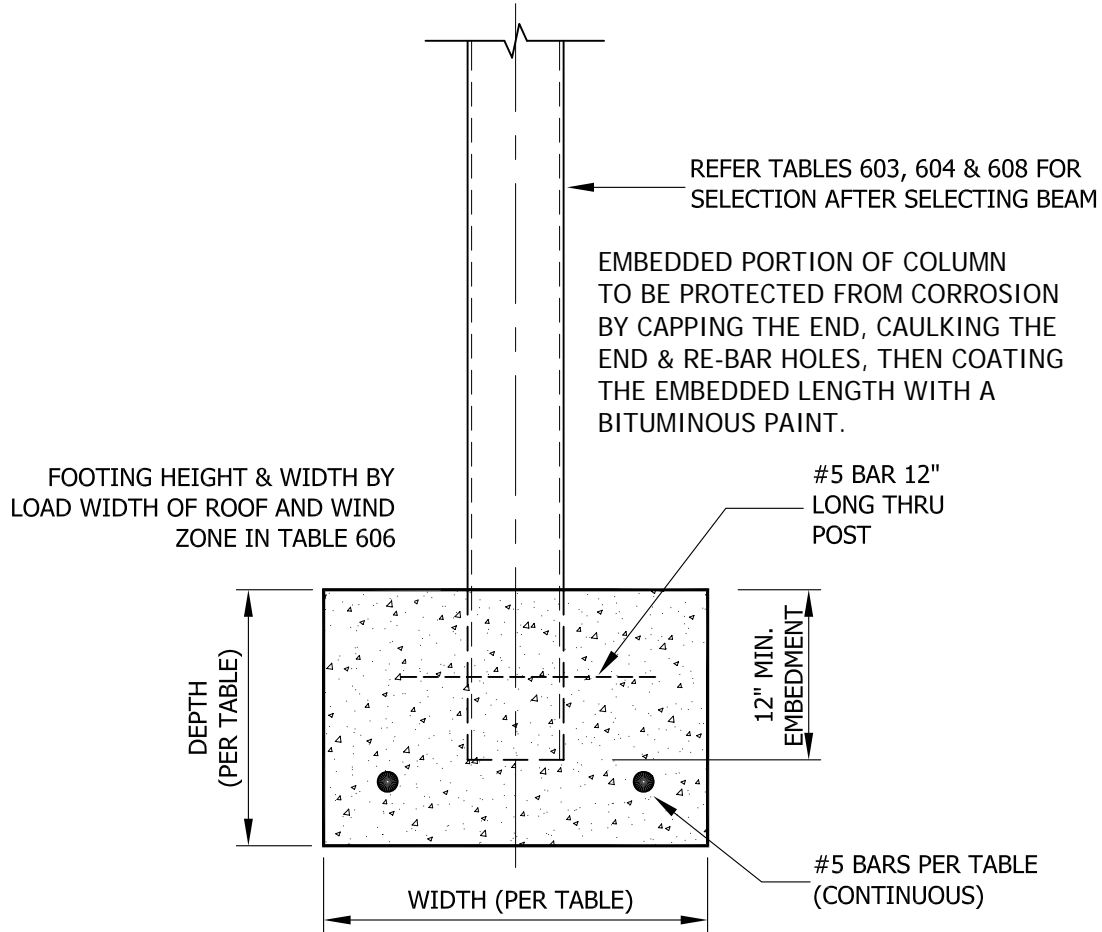
FOOTING DETAIL

(PATIO SLAB W/ MONOLITHIC EDGE FOOTING)



Concrete Slab Foundations with Monolithic Footings (Detail F1)					Table 605	
Total Height (In)	Bottom Width (In)	Solid Roofs in Exposure B (Monoslope or Gable)				
		Allowable Tributary Load Widths by Wind Zone				
		100 mph	110 mph	120 mph	130 mph	140 mph
16	12	13'-7¼"	12'-8½"	10'- 8"	9'-1¼"	7'-10¼"
16	16	15'- 9"	14'-8½"	12'-4¼"	10'-6¼"	9'- 1"
20	16	15'- 8"	14'-7½"	12'-3½"	10'-5¾"	9'-0¼"
24	16	21'-2¾"	19'-9¾"	16'-7¾"	14'-2¼"	12'-2¾"
24	20	24'-8¾"	23'-1¼"	19'-4¾"	16'-6½"	14'- 3"

Note: Maximum Post Spacing 10' - 0" for Concrete Slab with Monolithic Footings.



SECTION / CONTINUOUS PERIMETER FOOTING

F2
6

NOTE: POST SPACING 10' - 0" MAXIMUM FOR CONTINUOUS PERIMETER FOOTING

Continuous Perimeter Concrete Footings (Detail F2)			Table 606				
Exposure B			Allowable Solid Roof Tributary Load Widths by Wind Zone				
Height (In)	Width (In)	Reinforcement	100 mph	110 mph	120 mph	130 mph	140 mph
16	12	2 Each #5 (Bott)	13'- 2"	12'-3½"	10'- 4"	8'-9¾"	7'- 7"
16	16	2 Each #5 (Bott)	17'-6¾"	16'-4¾"	13'-9¼"	11'- 9"	10'-1½"
20	16	2 Each #5 (Bott)	21'-11½"	20'- 6"	17'-2¾"	14'- 8"	12'-7¾"
20	20	3 Each #5 (Bott)	27'-5¼"	25'-7½"	21'-6¼"	18'-4¼"	15'-9¾"
24	20	2 Each #5 (T&B*)	32'-11¼"	30'- 9"	25'- 10"	22'-0¼"	18'-11¾"
24	24	2 Each #5 (T&B*)	39'-6¼"	36'-10¾"	31'- 0"	26'- 5"	22'-9¼"
30	24	2 Each #5 (T&B*)	49'-4¾"	46'-1½"	38'- 9"	33'-0¼"	28'-5¾"

* T&B means Top and Bottom - provide #3 stirrups @ 12" o.c.

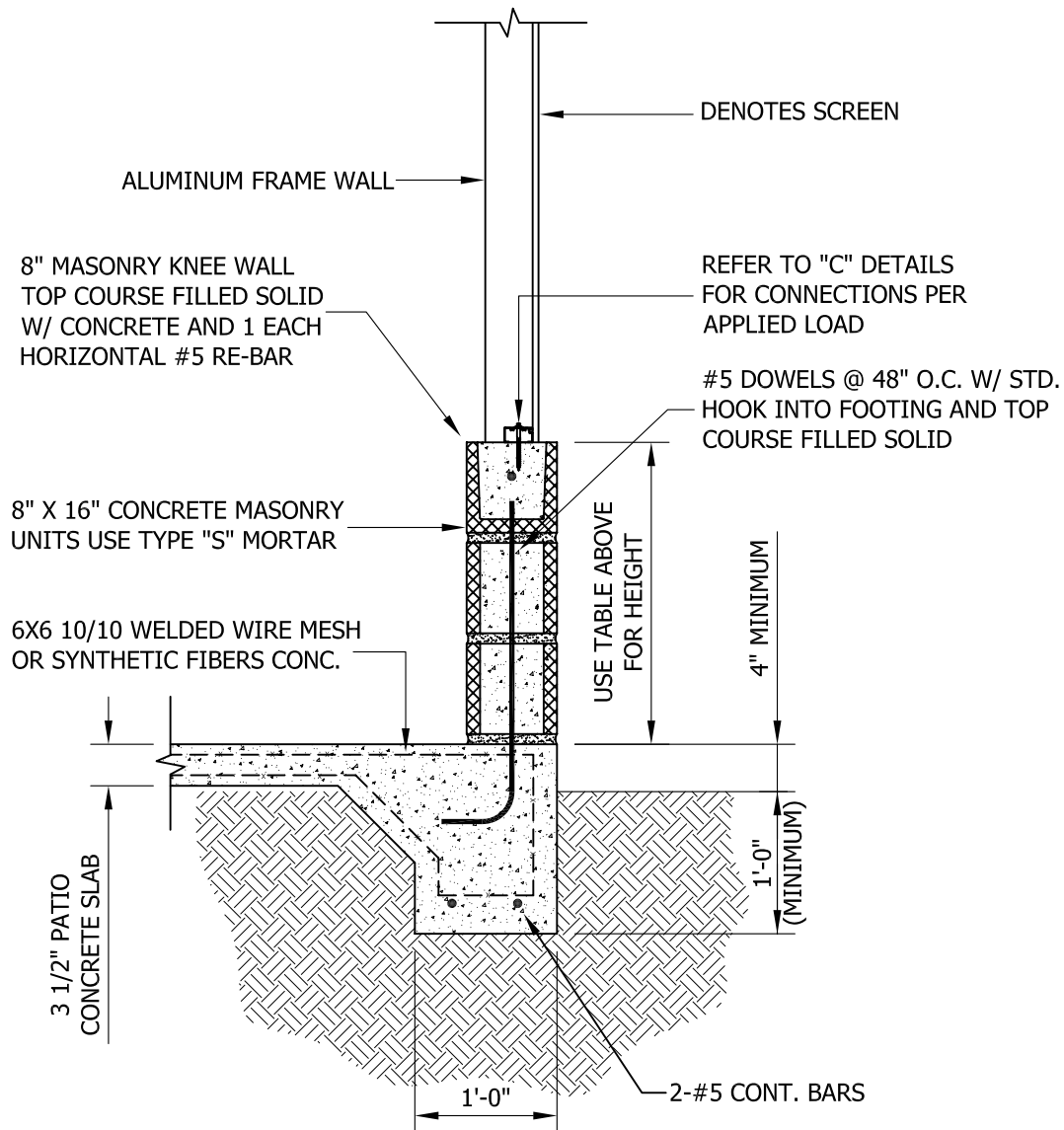
Chapter 2 - Screen Rooms

Allowable Wall Heights (feet)
8" CMU Knee-Walls in Screen Rooms
by Exposure B Wind Zone

Wall Heights:	100/110	120	130	140
8" CMU:	6	6	5	4
Aluminum:	10	8	9	9
Height Overall:	16	14	14	13

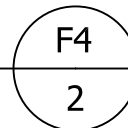
Allowable Wall Heights (feet)
8" CMU Knee-Walls in Screen Rooms
by Exposure C Wind Zone

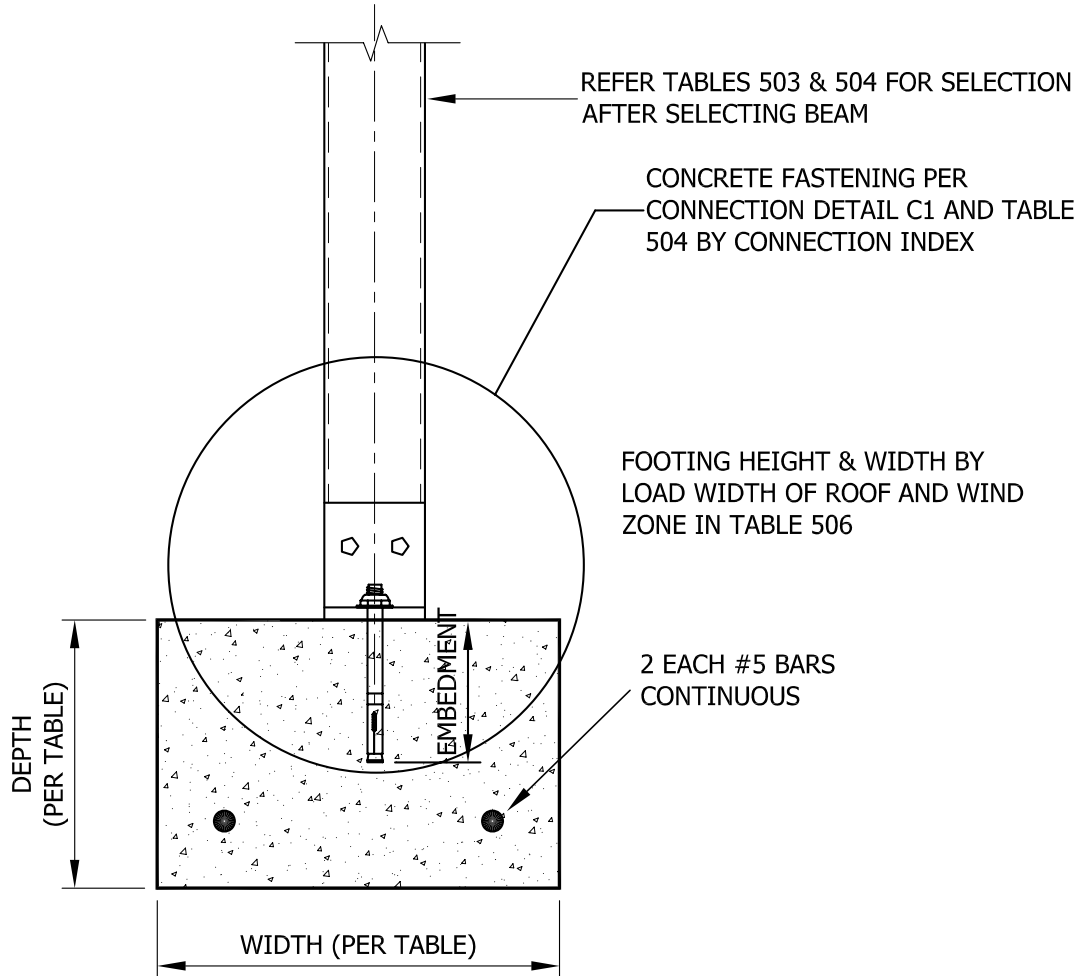
Wall Heights:	100/110	120	130	140
8" CMU:	5	5	4	4
Aluminum:	9	7	8	7
Height Overall:	14	12	12	11



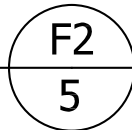
WALL BEARING ON BLOCK KNEE WALL

(BLOCK KNEE WALL ALSO KNOWN AS
8" CMU WALL OR APRON WALL)





SECTION / CONTINUOUS PERIMETER FOOTING



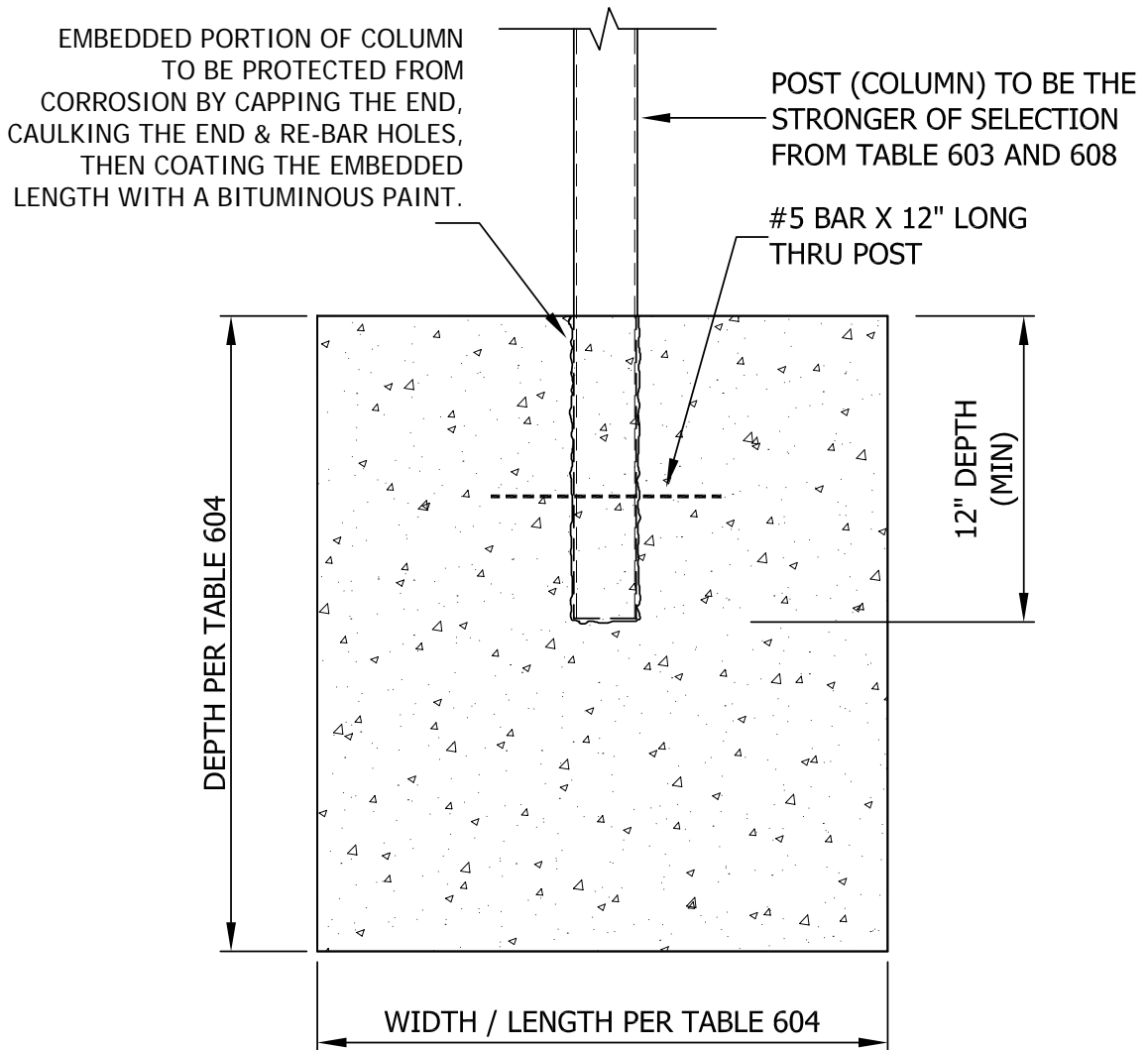
NOTE: POST SPACING 10' - 0" MAXIMUM FOR CONTINUOUS PERIMETER FOOTING

Continuous Perimeter Concrete Footings (Detail F2)		Table 506					
		Allowable Solid Roof Tributary Load Widths					
Height (In)	Width (In)	100 mph	110 mph	120 mph	130 mph	140 mph	150 mph
16	12	9'-10 ³ / ₄ "	8'-2 ¹ / ₂ "	6'-10 ³ / ₄ "	5'-10 ¹ / ₂ "	5'-0 ³ / ₄ "	4'-4 ³ / ₄ "
16	16	13'-2 ¹ / ₄ "	10'-11 ¹ / ₄ "	9'-2 ¹ / ₄ "	7'-9 ³ / ₄ "	6'-9"	5'-10 ¹ / ₂ "
20	16	16'-6"	13'-8"	11'-5 ³ / ₄ "	9'-9 ¹ / ₄ "	8'-5 ¹ / ₄ "	7'-4"
20	20	20'-7 ¹ / ₄ "	17'-1"	14'-4 ¹ / ₄ "	12'-2 ³ / ₄ "	10'-6 ¹ / ₂ "	9'-2 ¹ / ₄ "
24	20	24'-8 ³ / ₄ "	20'-6"	17'-2 ³ / ₄ "	14'-8"	12'-7 ³ / ₄ "	11'-0 ¹ / ₄ "
24	24	29'-8 ¹ / ₄ "	24'-7 ¹ / ₄ "	20'-8"	17'-7 ¹ / ₄ "	15'-2"	13'-2 ¹ / ₂ "
30	24	37'-1 ¹ / ₄ "	30'-9"	25'-10"	22'-0"	18'-11 ¹ / ₂ "	16'-6 ¹ / ₄ "

* (B) indicates bottom only

Load Index #	Isolated Footing Size
A	2'-0" X 2'-0" X 2'-0"
B	2'-4 X 2'-4" X 2'-0"
C	2'-8" X 2'-8" X 2'-8"
D	3'-0" X 3'-0" X 3'-0"
E	3'-4" X 3'-4" X 3'-2"
F	3'-8" X 3'-8" X 3'-8"
G	4'-0" X 4'-0" X 4'-0"

Load Index corresponds to tabular values in Beam Selection Table 602



ISOLATED FOOTING DETAIL

F3
6